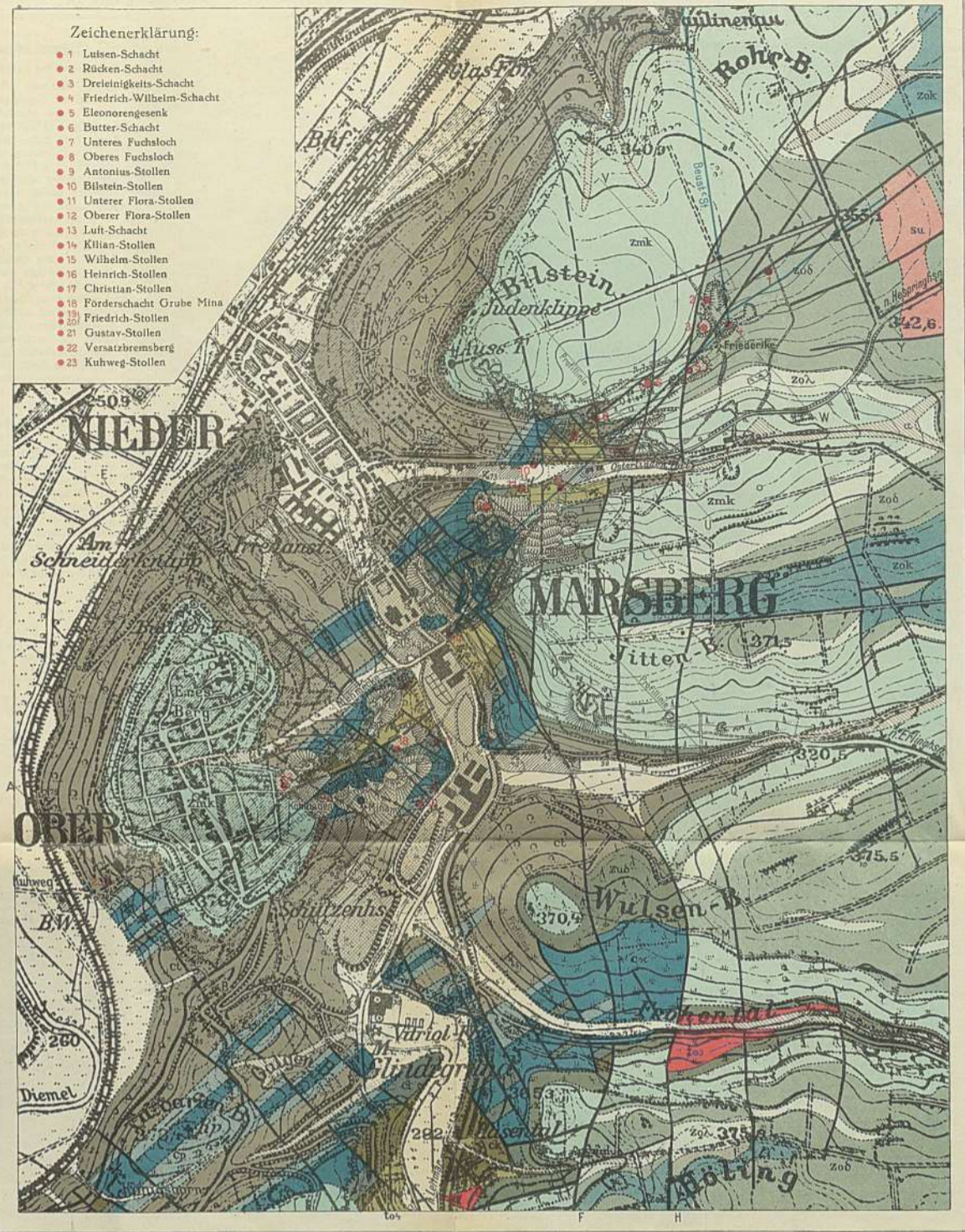


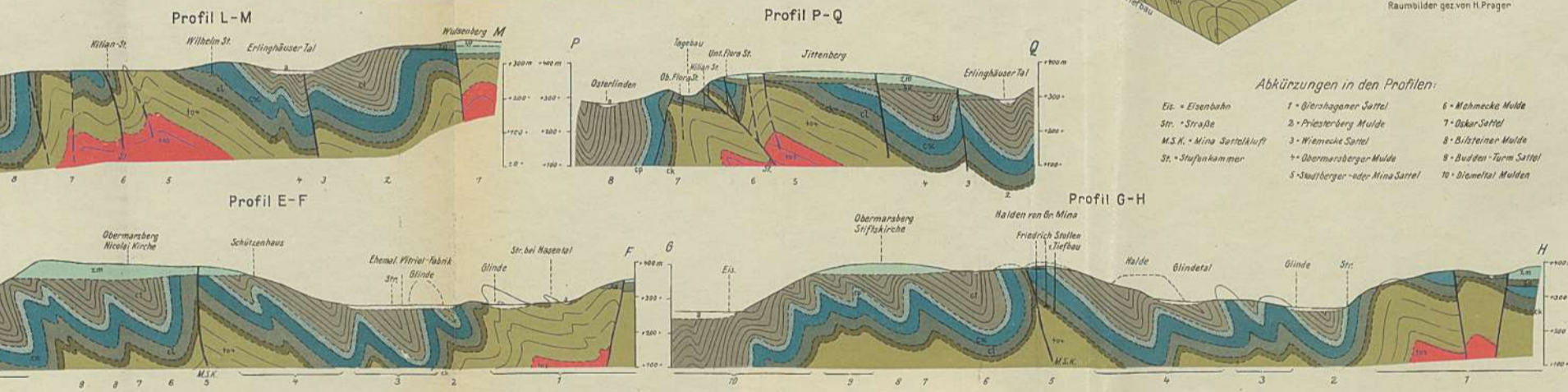
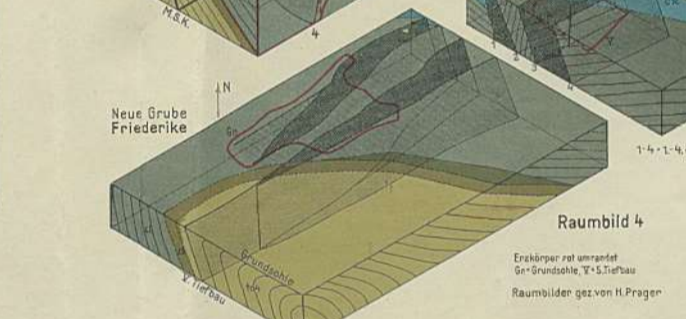
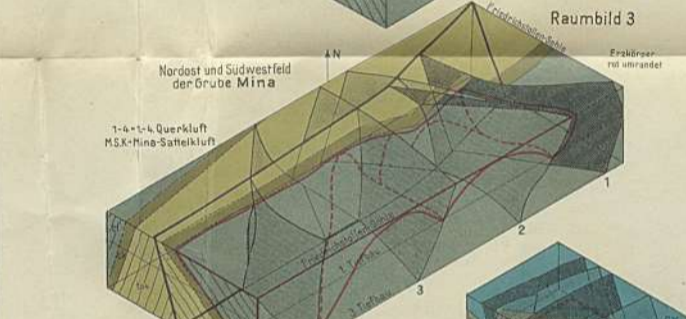
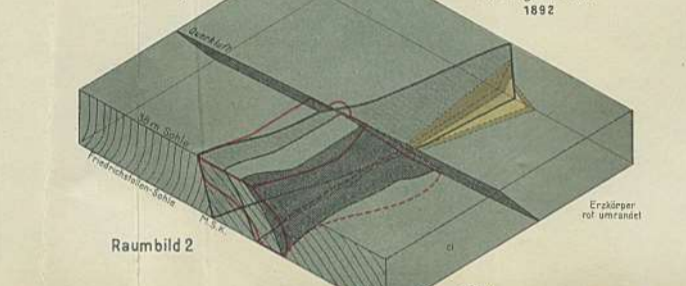
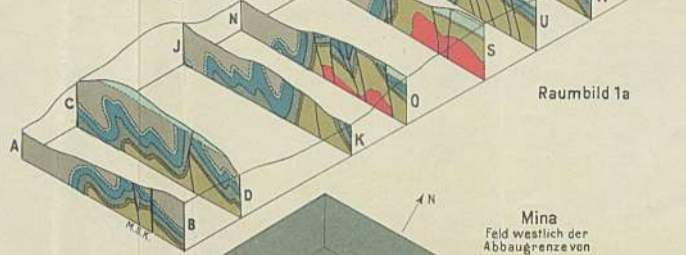
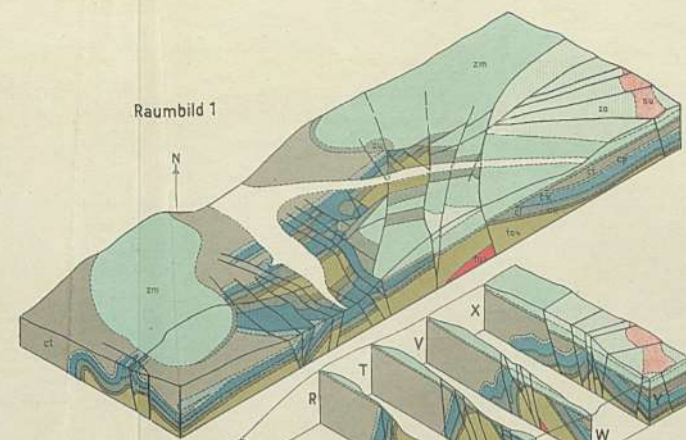
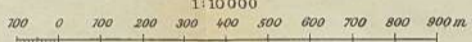
Geologische Karte der Gegend von Marsberg

Glückauf, Berg- und Hüttenmännische Zeitschrift, 1930

Tafel 5



Aufgenommen von W. Pauckmann, 1929. Lithographie u. Druck d. Preuss. Geol. Landesanstalt, Berlin.



- Abkürzungen in den Profilen:**
- Ek. = Eisenbahn
 - Str. = Straße
 - M.S.K. = Mina Sattelkluft
 - St. = Stufenkammer
 - 1 = Biershagener Sattel
 - 2 = Priesberg Mulde
 - 3 = Wiemacke Sattel
 - 4 = Obermarsberger Mulde
 - 5 = Kahlberger- oder Mina Sattel
 - 6 = Wiemacke Mulde
 - 7 = Biershagener Sattel
 - 8 = Bilsteiner Mulde
 - 9 = Baulden-Turm Sattel
 - 10 = Dremel-Tal Mulden